



STRUCTURAL STEEL BEAM

The ideal beam for home improvements

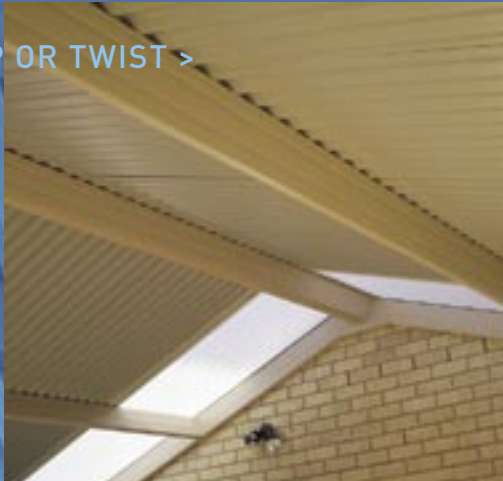
colorbeam™

COLORBEAM™ STEEL BEAMS ARE PERFECT FOR ALL HOME IMPROVEMENT PROJECTS COMBINING THE TRADITIONAL LOOK OF TIMBER BEAMS WITH THE STRENGTH AND DURABILITY OF STEEL

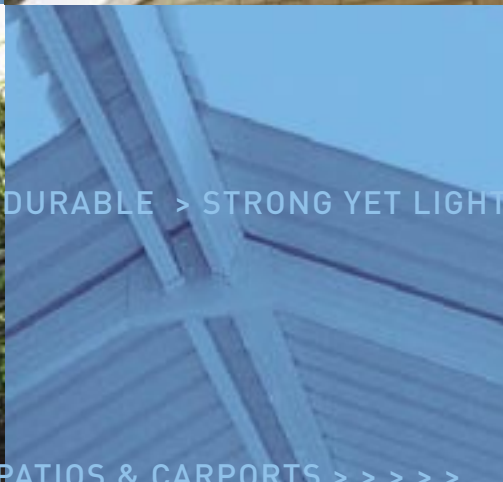
ATTRACTIVE & DURABLE > TRADITIONAL PROFILE >



> WON'T WARP OR TWIST >



ATTRACTIVE & DURABLE > STRONG YET LIGHTWEIGHT



NO NEED TO PAINT > PERFECT FOR PATIOS & CARPORTS >>>>



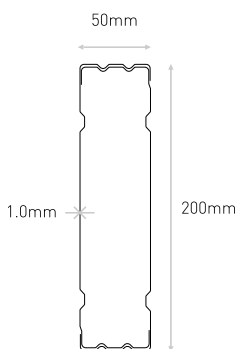
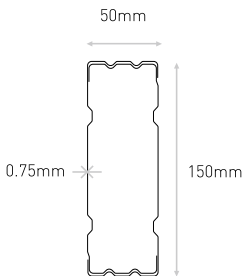
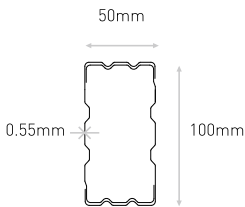
> STRONG YET LIGHTWEIGHT



STRUCTURAL STEEL BEAM

The stronger, lighter, better-looking beam.

THREE STANDARD BEAM SIZES

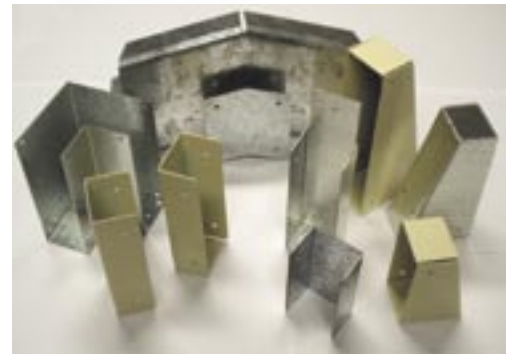
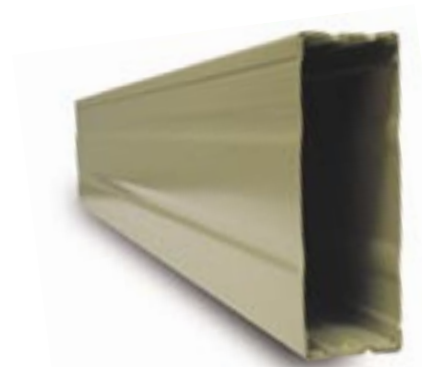


Colorbeam™ structural steel beams from Spantec Systems give you the good looks of timber plus the strength and durability of steel – with the advantage of a low maintenance finish.

The streamlined, rectangular profile of Colorbeam™ closely resembles the shape of traditional timber beams. But unlike timber, Colorbeam™ won't twist, warp or rot and doesn't need painting.

Colorbeam™ is manufactured from two C-shaped sections of high-tensile steel, joined to form an extremely strong "box beam" that is also very lightweight. The overlapping sections of the beam provide extra rigidity, allowing longer spans between supports.

Colorbeam™ structural steel beams provide an ideal roof framing system for all home improvement applications such as patios, carports and awnings. They are also widely used for institutional shade applications such as covered walkways and lunch areas because of their durable, low-maintenance finish.



CONNECTION BRACKETS

Colorbeam™ comes with a comprehensive range of connection brackets.

SPAN CHARTS AVAILABLE
ON THE SPANTEC WEBSITE

www.spantec.com.au

www.spantec.com.au



Colorbeam™ roof beam



Boxspan® floor framing

Colorbeam™ is the architectural version of the Boxspan® lightweight structural beam, which was launched by Spantec Systems in 1993. Boxspan® has since become a market leader in steel framing systems for residential floors and decks.

For further information on Colorbeam™ structural steel beams and the Boxspan® steel flooring system, visit the Spantec website at www.spantec.com.au

S P A N T E C

SPANTEC SYSTEMS PTY LTD

17 Drapers Road,
Braemar (Mittagong) NSW 2575
Phone: (02) 4872 1611
Fax: (02) 4872 1616
Email: sales@spantec.com.au
Website: www.spantec.com.au