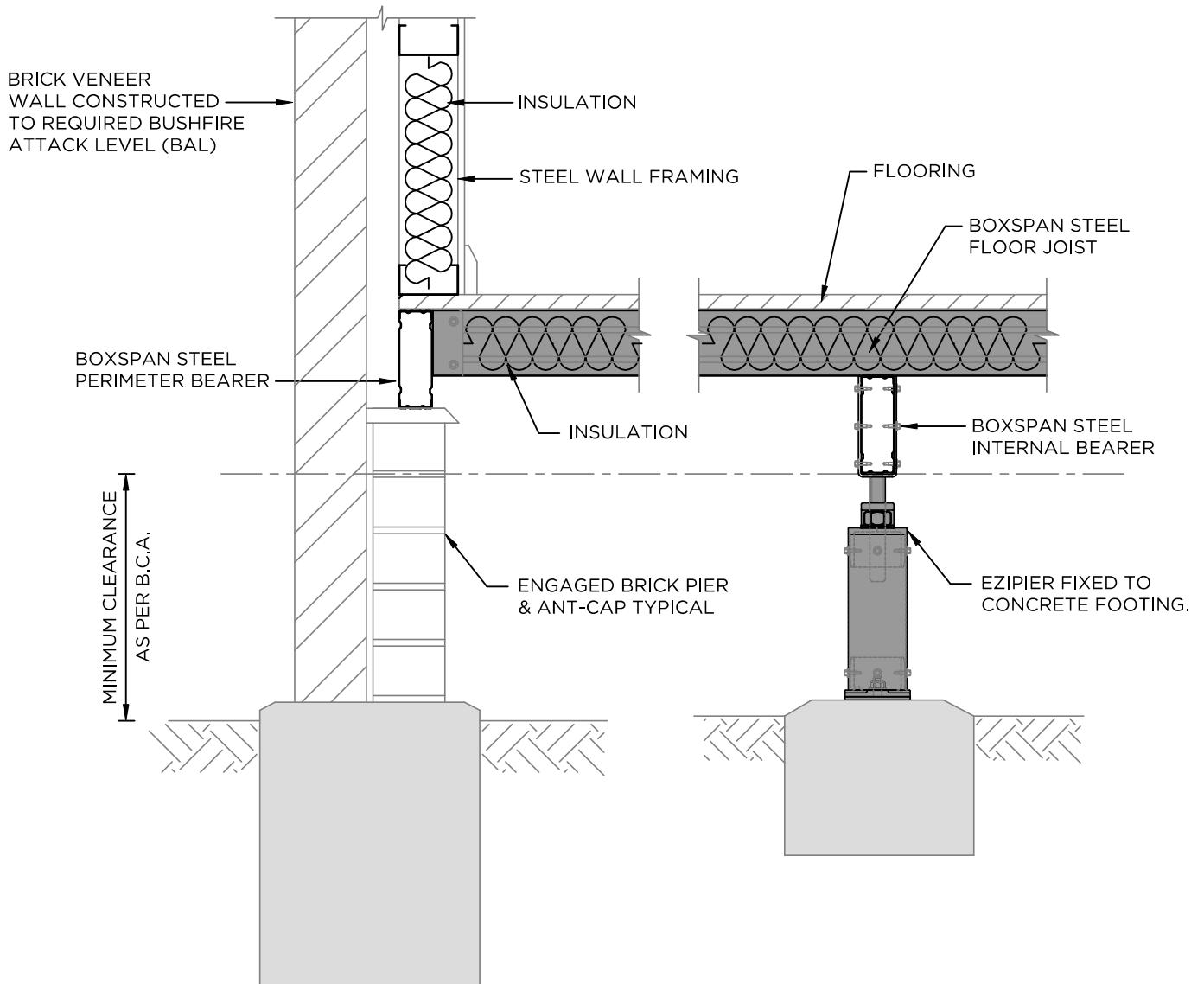


### BAL-12.5 TO BAL-FZ



## BOXSPAN RAISED PERIMETER SYSTEM

### SUSPENDED STEEL FLOOR SYSTEM - ENCLOSED SUB-FLOOR

TO BE READ IN CONJUNCTION WITH THE FOLLOWING STANDARDS & WEBSITE:  
 ● NASH STANDARD STEEL FRAMED CONSTRUCTION IN BUSHFIRE AREAS ● AUSTRALIAN STANDARD AS 3959-2009.  
[www.spantec.com.au/solutions/building-in-bushfire-prone-areas](http://www.spantec.com.au/solutions/building-in-bushfire-prone-areas)